

2<sup>nd</sup> Edition

# MOVING LEVELS

## THE LOCKDOWN EFFECTS

May 2020

**Pupils receive school uniforms in the Northern Cape**

RESHAPING BUSINESS

COVID-19

A graphic with a dark grey background and a white diagonal stripe. The text "COVID-19 LOCKDOWN TO BE EASED" is written in white, bold, sans-serif capital letters, following the angle of the stripe.

A proud initiative of  
The Department of Transport

[www.rtmc.co.za](http://www.rtmc.co.za)



# EDITOR'S

## Column

Coronavirus pandemic has caused immeasurable and unimaginable pain, destruction and the devastation across the globe. There has been extensive coverage of the challenges that has been presented by this new deadly virus, as medical and healthcare workers race against time to save lives from this relentless enemy that has seen close to 6.5 million confirmed cases. While some have recovered with great relief, close to 400 000 people have sadly succumbed to the virus leaving holes in the lives of those they have left behind. COVID-19 is no respecter of persons or skin pigmentation, young and old, rich or poor it ravages with the same ferocious intensity.

The most painful part about this virus is its stark difference from other dreaded illnesses, it does not give you time to prepare yourself or those you love, it moves at a speed of lightning bolt, it thrives on crowded spaces, it is anti-social :- people or loved ones cannot be around you or care for you when you are ill, you are all alone. It thrives in contaminated or unclean surfaces. It is sudden, it never gives you time to say good-bye. One day, you think you are coping and giving hope to loved ones that you are beating the virus, the next day you take a turn for the worst and you succumb to the virus. It is sneaky, it presents itself differently from one person to the other, it can only take contact with a person who has the virus or touching a contaminated surface for one to be infected.

Those who have recovered from the virus, give an account of a dangerous enemy that batters the body with jabbing chest pains, drowning feeling, heavy weight on chest, closing up of the chest, downpours of sweat and some have experienced anosmia – loss of smell and taste.

There is currently no cure for the Coronavirus, but we can do our bit to flatten the curve and stop the spread.

COVID-19 has presented our country with the greatest health and economic challenge that has altered lives and our way of living, driving billions of people across the globe to adapt to new normal ways of living and conducting ourselves in public.

The nation has once again shown the indomitable spirit of unity by mobilising to deliver food parcels to the poor and unemployed who have been hardest hit by the ramifications of the pandemic.

As we gear up for the easing off, of the lockdown levels, we need to stay alert, to be more vigilant than ever before, continue to maintain social distancing, wear a face mask in public spaces, maintain good hand hygiene and take precautionary measures to stay protected. A greater battle still lies ahead of us and we need to brace ourselves for the rise in infections and deaths.

While alcohol will be available for sale for consumption at home, we must also remember that we will need all the strength and ammunition to fight the virus. Alcohol weakens the immune system and reduces the ability to cope with infectious diseases. Keep Safe. Keep Sober and drink responsibly.

Let's not lose the gains we have made in the past weeks of the lockdown by drinking irresponsibly and letting your guard down. Research studies have proven that alcohol also influences driver attitude, decision making, alertness, judgement, response, and control of the vehicle.

Ease the pressure off the front liners and the health facilities, drinking and driving contributes to road crash injuries and fatalities. Lessen your movements and only travel when necessary.

As the numbers increase on daily basis, our only line of defence is behavioural change, adherence to safety measures, maintaining good hygiene, social distancing and staying alert.

South Africa, it is in our hands to do our part stop the spread by adapting to the new normal and adhering to regulations to save lives.

Sizonqoba

**#StaySafe #StayAlert #StopTheSpread #SaveLives**

# SA GEARING UP FOR THE NEXT LEVEL OF THE LOCKDOWN

On Wednesday 13 May 2020, while addressing the nation, President Cyril Ramaphosa announced ongoing measures to manage the spread of the coronavirus through the implementation of a risk adjusted strategy that will result in most areas of South Africa moving to level 3.

He said that government will begin with consultations with relevant stakeholders on a proposal that will see most of the country placed at Level 3 from beginning of June, and Level 4 continuing in some parts of the country with increasing rates of COVID-19 infections.

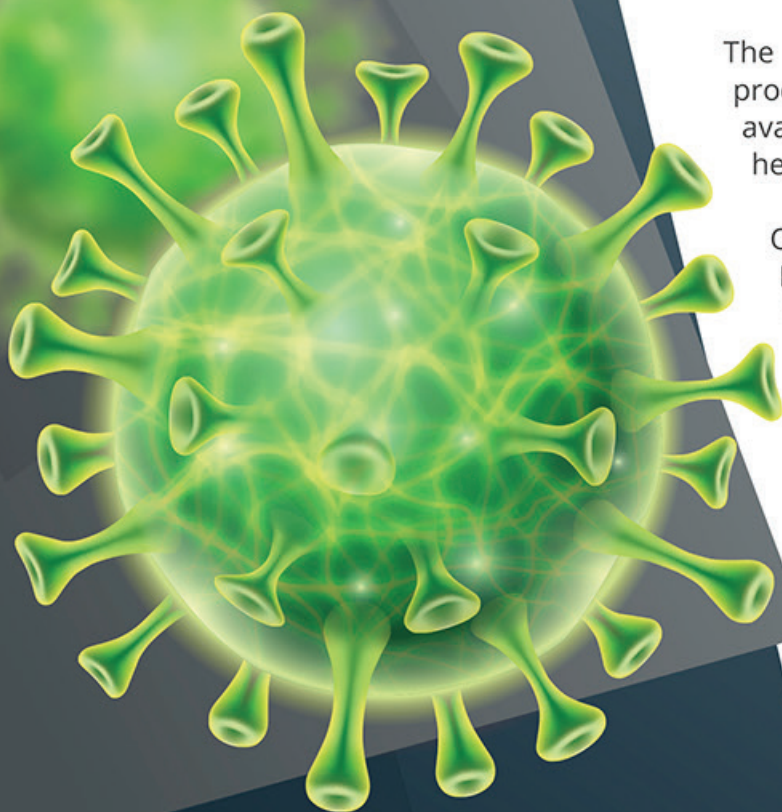
President Ramaphosa said that government was preparing a further easing of the lockdown and a gradual opening of the economy, but warned that lifting the lockdown too abruptly and too quickly risked the country seeing a "rapid and insurmountable surge in infections".

The president said that government would thus proceed cautiously and would be guided by the best available evidence from local and international health experts.

On the easing of the lockdown to Level 3, President Ramaphosa noted that coronavirus infections were mostly concentrated in a few metropolitan municipalities and districts across the country and indicated that with the easing to Level 3, some areas may require to remain or be moved to certain levels depending on the infection rate trajectory.

*"rapid and insurmountable surge in infections".*

"It is important that we maintain stringent restrictions in these areas and restrict travel out of these areas, to parts



of the country with lower rates of

infection. We will make further announcements after the completion of the consultations," he said.

Ramaphosa thanked South Africans for adhering to the lockdown and for enduring the sacrifices that it entailed. "During this time, South Africans have demonstrated great courage, resilience and responsibility" he said.

He reminded the nation that despite its duration and its severity, the lockdown was absolutely necessary. "Without the lockdown the number of coronavirus infections would have soared uncontrollably, our health facilities would have been overwhelmed and thousands more South Africans would have died" he said.

He added that "this coronavirus is taking a heavy toll not only on the health of our people, but also on our people's ability to earn a living, to feed themselves and their families, to learn and develop, and to enjoy many of the basic freedoms that we daily take for granted".

The President encouraged the nation to keep in thoughts and prayers all those who have been infected by the coronavirus, all those who have lost loved ones, and also those who have endured – and continue to endure – great hardship because of the pandemic.



**\*\*If you think you have been exposed to the Covid-19 virus,  
please call the 24-hour hotline on 0800 029 999 or  
visit [sacoronavirus.co.za](http://sacoronavirus.co.za)**



# Pupils receive school uniform in the Northern Cape

The Minister of Transport Mr Fikile Mbalula in partnership with the RTMC, Premier Zamani Saul and MEC Nontebeko Vilakazi handed over school uniform and Shova Kalula bicycles to disadvantaged learners in the Northern Cape, De Aar. This handover took place at Veritas High School on Monday, 24 February 2020. The Department of Transport has distributed more than 100 000 bicycles to learners throughout South Africa since the inception of the Shova Kalula programme in 2001. With the aim of expanding the programme, the RTMC partnered with the Department to distribute 400 school uniforms to learners from disadvantaged and poverty stricken communities in the province.

Principal Buyelwa Daimane of Emthanjeni Primary School expressed her appreciation of the school uniform donation by saying "Some of the learners end up not coming to school because they don't have proper school uniform, this also has a negative psychological effect to some of the learners, it negatively affects their performance at school". She continued to say "Seeing the children receive new school uniform has touched our hearts as the leaders of the schools, the smiles that were put on their faces are priceless", she said.

Minister Mbalula encouraged the parents to not use the Shova Kalula bicycles for their own personal use, he mentioned that they are meant to be used by the learners to go to school and build their future in order to alleviate the high rate of poverty. He mentioned that the school uniform initiative will assist in ensuring that the learners look presentable and are able to attend school without disturbance.

The RTMC through its CSR projects continues to reach out to previously disadvantaged communities, with an aim of contributing towards changing the lives of the indigent in South African. Education remains one of our key focus areas and equal access to education for all is one of the founding principles of the RTMC school uniform projects.



# RESHAPING THE BUSINESS

## THROUGH DIGITAL REVOLUTION

The COVID-19 crisis has seen our relationship with technology change and it could permanently change the way we work in the future.

The pandemic has forced us to embrace the centrality of technology advancements. The way we connect, communicate, and conduct business has been forever altered.

Marketing agencies are certainly in a more privileged position compared to many. Thanks to technology, we have the luxury of just picking up laptops and working from home.

Agencies, like many other businesses, had to become resilient, adopt new innovative ways of working and engage differently to continue delivering on client expectations.

Now it has become even more important than ever to create meaningful campaigns with impactful messaging, whilst attempting to safeguard the revenues.

The scale of technology and the speed at which it is happening is shining a bright light on the fact

that companies are facing a once-in-a-generation shift. And for many, the uncertainty about what the future will be, it is clear already that it will be digital.

Despite noteworthy successes in adjusting to COVID-19, many leaders have been frustrated by how slow necessary changes have moved, from serving a surge of customers migrating to digital channels to scaling back-end operations.

Many believe that one of the biggest reasons for these difficulties is that, while companies have had many digital pilots and initiatives in place, they did not add up to a coherent and integrated digital engine to drive business forward.

Given how fast change is happening, waiting until you see signs of recovery will be too late.

We have not seen the end of the crisis, nor do we know exactly when the recovery will come. But it will come, and companies who can best prepare their businesses effectively for a more digital future will give their companies the best chance for a brighter future.

# MOVING LEVELS OF COVID-19

Government announced the implementation of a risk-adjusted strategy in easing the nationwide lockdown. This strategy entails the use of a system of alert levels applicable nationally and provincially.

Nationally, on 01 May 2020, South Africa moved from its devastating position at level 5 to level 4. This means that all essential services are allowed to continue operating together with the following additional sectors: food retail stores, agriculture, forestry, mining, financial and professional services, postal and telecommunications services, information technology services and formal waste recycling services.

Transport restrictions are largely lifted subject to limitations on vehicle capacity and hygiene requirements. No inter-provincial movement of people will be allowed except under exceptional circumstances.

However, this does not necessarily mean that employers and employees from sectors listed above will be able to resume operations and return to work after the lockdown. This will depend on the alert level assigned to each province.

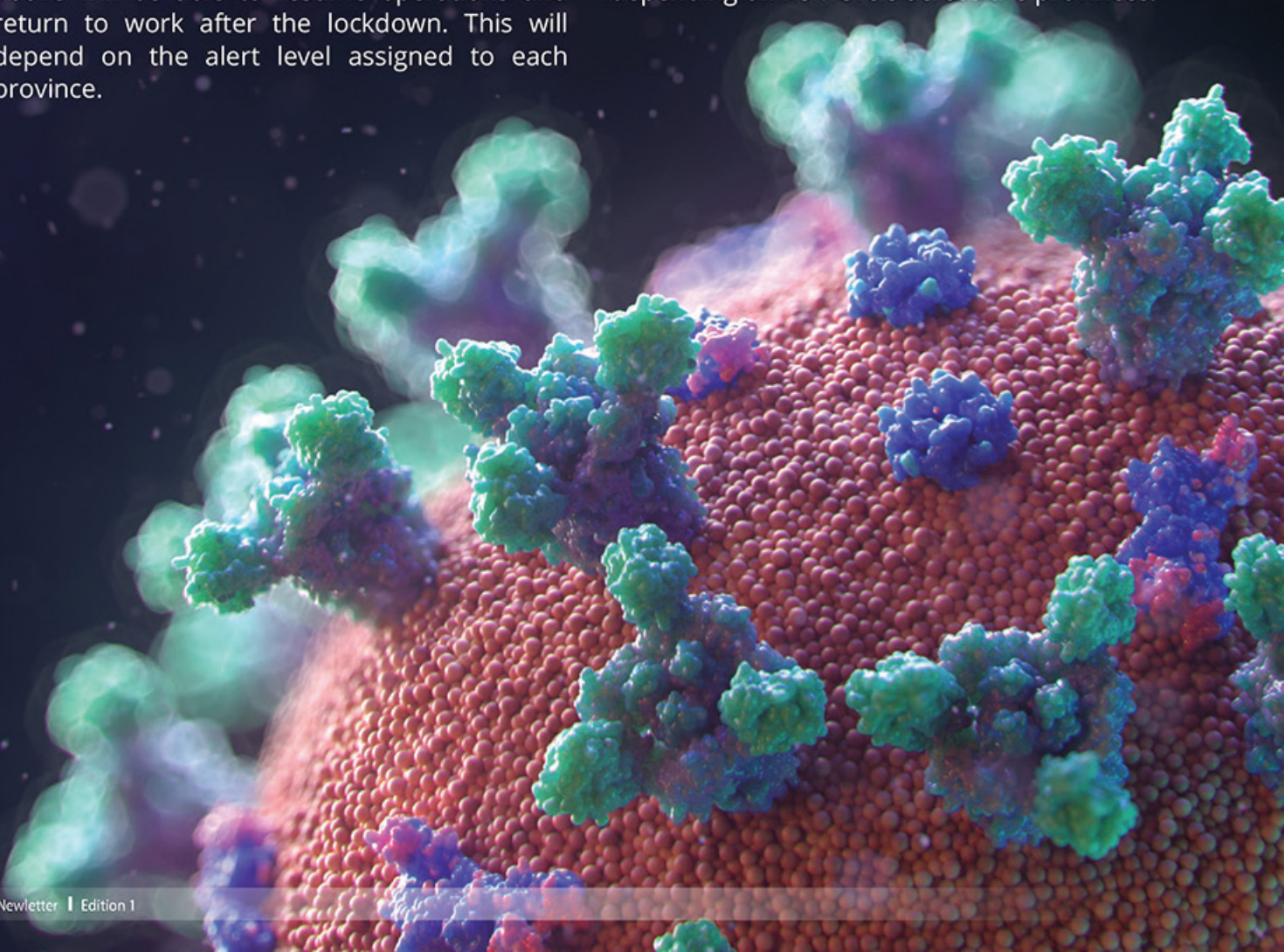
The alert level per province will be determined with reference to the rate of infection and the health system's capacity to handle the virus at that particular point in time.

The alert levels for each province are still to be announced. In determining the alert levels, government will take three main criteria into account:

- Risk of transmission
- Expected impact on the sector of a continued lockdown
- Value of the sector to the economy

The strategy also requires that the industries that return to work first should have an acceptably low transmission risk, be critical to the value of the economy and be under severe economic stress.

Therefore, for employers who have a multi-provincial footprint, they may find that they may only be able to operate in a certain province(s) depending on risk levels across the provinces.





**COVID-19 WAR  
CONTINUE TO PUT  
YOUR BOOTS ON**

The background image is a composite. It features a world map with red circles of varying sizes indicating COVID-19 cases. Overlaid on this is a computer screen displaying a map of Europe and a list of confirmed cases by province/state/dependency. The text 'COVID-19 WAR CONTINUE TO PUT YOUR BOOTS ON' is written in large, bold, white capital letters across the center of the image.

Visible text on the computer screen includes:

- Moscow
- Coronavirus COVID-19 Global Cases by the Center for Systems
- Warsaw
- UKRAINE
- Total Confirmed
- 182,405
- Confirmed Cases by Province/State/Dependency
- Italy
- Spain
- South Korea
- SAUDI ARABIA
- Qatar
- USA
- Canada
- Japan
- China
- Iran
- France
- Germany
- UK
- Sweden
- Norway
- Denmark
- Finland
- Poland
- Czech Republic
- Slovakia
- Hungary
- Romania
- Bulgaria
- Greece
- Turkey
- Russia
- Belarus
- Ukraine
- Moldova
- Georgia
- Armenia
- Azerbaijan
- Yemen
- Saudi Arabia
- Qatar
- UAE
- Oman
- Kuwait
- Bahrain
- Singapore
- Malaysia
- Indonesia
- Philippines
- Vietnam
- Thailand
- Myanmar
- Laos
- Cambodia
- Timor-Leste
- East Timor
- Brunei
- Sri Lanka
- Maldives
- Nepal
- Bhutan
- India
- Pakistan
- Afghanistan
- Iran
- Turkey
- Syria
- Lebanon
- Israel
- Jordan
- Saudi Arabia
- Qatar
- UAE
- Oman
- Kuwait
- Bahrain
- Singapore
- Malaysia
- Indonesia
- Philippines
- Vietnam
- Thailand
- Myanmar
- Laos
- Cambodia
- Timor-Leste
- East Timor
- Brunei
- Sri Lanka
- Maldives
- Nepal
- Bhutan
- India
- Pakistan
- Afghanistan
- Iran
- Turkey
- Syria
- Lebanon
- Israel
- Jordan
- Saudi Arabia
- Qatar
- UAE
- Oman
- Kuwait
- Bahrain
- Singapore
- Malaysia
- Indonesia
- Philippines
- Vietnam
- Thailand
- Myanmar
- Laos
- Cambodia
- Timor-Leste
- East Timor
- Brunei
- Sri Lanka
- Maldives
- Nepal
- Bhutan
- India
- Pakistan
- Afghanistan
- Iran
- Turkey
- Syria
- Lebanon
- Israel
- Jordan
- Saudi Arabia
- Qatar
- UAE
- Oman
- Kuwait
- Bahrain
- Singapore
- Malaysia
- Indonesia
- Philippines
- Vietnam
- Thailand
- Myanmar
- Laos
- Cambodia
- Timor-Leste
- East Timor
- Brunei
- Sri Lanka
- Maldives
- Nepal
- Bhutan
- India
- Pakistan
- Afghanistan
- Iran
- Turkey
- Syria
- Lebanon
- Israel
- Jordan
- Saudi Arabia
- Qatar
- UAE
- Oman
- Kuwait
- Bahrain
- Singapore
- Malaysia
- Indonesia
- Philippines
- Vietnam
- Thailand
- Myanmar
- Laos
- Cambodia
- Timor-Leste
- East Timor
- Brunei
- Sri Lanka
- Maldives
- Nepal
- Bhutan
- India
- Pakistan
- Afghanistan
- Iran
- Turkey
- Syria
- Lebanon
- Israel
- Jordan
- Saudi Arabia
- Qatar
- UAE
- Oman
- Kuwait
- Bahrain
- Singapore
- Malaysia
- Indonesia
- Philippines
- Vietnam
- Thailand
- Myanmar
- Laos
- Cambodia
- Timor-Leste
- East Timor
- Brunei
- Sri Lanka
- Maldives
- Nepal
- Bhutan
- India
- Pakistan
- Afghanistan
- Iran
- Turkey
- Syria
- Lebanon
- Israel
- Jordan
- Saudi Arabia
- Qatar
- UAE
- Oman
- Kuwait
- Bahrain
- Singapore
- Malaysia
- Indonesia
- Philippines
- Vietnam
- Thailand
- Myanmar
- Laos
- Cambodia
- Timor-Leste
- East Timor
- Brunei
- Sri Lanka
- Maldives
- Nepal
- Bhutan
- India
- Pakistan
- Afghanistan
- Iran
- Turkey
- Syria
- Lebanon
- Israel
- Jordan
- Saudi Arabia
- Qatar
- UAE
- Oman
- Kuwait
- Bahrain
- Singapore
- Malaysia
- Indonesia
- Philippines
- Vietnam
- Thailand
- Myanmar
- Laos
- Cambodia
- Timor-Leste
- East Timor
- Brunei
- Sri Lanka
- Maldives
- Nepal
- Bhutan
- India
- Pakistan
- Afghanistan
- Iran
- Turkey
- Syria
- Lebanon
- Israel
- Jordan
- Saudi Arabia
- Qatar
- UAE
- Oman
- Kuwait
- Bahrain
- Singapore
- Malaysia
- Indonesia
- Philippines
- Vietnam
- Thailand
- Myanmar
- Laos
- Cambodia
- Timor-Leste
- East Timor
- Brunei
- Sri Lanka
- Maldives
- Nepal
- Bhutan
- India
- Pakistan
- Afghanistan
- Iran
- Turkey
- Syria
- Lebanon
- Israel
- Jordan
- Saudi Arabia
- Qatar
- UAE
- Oman
- Kuwait
- Bahrain
- Singapore
- Malaysia
- Indonesia
- Philippines
- Vietnam
- Thailand
- Myanmar
- Laos
- Cambodia
- Timor-Leste
- East Timor
- Brunei
- Sri Lanka
- Maldives
- Nepal
- Bhutan
- India
- Pakistan
- Afghanistan
- Iran
- Turkey
- Syria
- Lebanon
- Israel
- Jordan
- Saudi Arabia
- Qatar
- UAE
- Oman
- Kuwait
- Bahrain
- Singapore
- Malaysia
- Indonesia
- Philippines
- Vietnam
- Thailand
- Myanmar
- Laos
- Cambodia
- Timor-Leste
- East Timor
- Brunei
- Sri Lanka
- Maldives
- Nepal
- Bhutan
- India
- Pakistan
- Afghanistan
- Iran
- Turkey
- Syria
- Lebanon
- Israel
- Jordan
- Saudi Arabia
- Qatar
- UAE
- Oman
- Kuwait
- Bahrain
- Singapore
- Malaysia
- Indonesia
- Philippines
- Vietnam
- Thailand
- Myanmar
- Laos
- Cambodia
- Timor-Leste
- East Timor
- Brunei
- Sri Lanka
- Maldives
- Nepal
- Bhutan
- India
- Pakistan
- Afghanistan
- Iran
- Turkey
- Syria
- Lebanon
- Israel
- Jordan
- Saudi Arabia
- Qatar
- UAE
- Oman
- Kuwait
- Bahrain
- Singapore
- Malaysia
- Indonesia
- Philippines
- Vietnam
- Thailand
- Myanmar
- Laos
- Cambodia
- Timor-Leste
- East Timor
- Brunei
- Sri Lanka
- Maldives
- Nepal
- Bhutan
- India
- Pakistan
- Afghanistan
- Iran
- Turkey
- Syria
- Lebanon
- Israel
- Jordan
- Saudi Arabia
- Qatar
- UAE
- Oman
- Kuwait
- Bahrain
- Singapore
- Malaysia
- Indonesia
- Philippines
- Vietnam
- Thailand
- Myanmar
- Laos
- Cambodia
- Timor-Leste
- East Timor
- Brunei
- Sri Lanka
- Maldives
- Nepal
- Bhutan
- India
- Pakistan
- Afghanistan
- Iran
- Turkey
- Syria
- Lebanon
- Israel
- Jordan
- Saudi Arabia
- Qatar
- UAE
- Oman
- Kuwait
- Bahrain
- Singapore
- Malaysia
- Indonesia
- Philippines
- Vietnam
- Thailand
- Myanmar
- Laos
- Cambodia
- Timor-Leste</

"This is not the time to beat the system. It is time to work together. This is not a punishment. It is for our own collective good. That is how we will move to Level 3, "the Minister of Cooperative Governance and Traditional Affairs Dr Nkosazana Dlamini-Zuma said as she explained what level 4 meant.

She said Level 4 is still lockdown but “a few things will change.” It is an easier lockdown,” she said. “The lockdown is not gone. There will be few changes. There will be more and more companies opening up and going to work. That is the major change,” she said.

She added that the virus had exposed the deep fault lines in South Africa such as hunger, poverty, unemployment, inequality and a spatial planning scheme inherited from the apartheid government that were never really changed by the democratic government.

She said it is now mandatory for people to wear a cloth mask when they leave their homes." When you leave your house, you must have a cloth mask. It is mandatory. If you don't have a mask you can use a scarf or a T-shirt." she said. It is in the light of this background that we all wear or cover with masks so we can flatten the curve of coronavirus.

# THE EFFECTS OF COVID-19 PANDEMIC ON ROAD SAFETY IN SOUTH AFRICA

The World Health Organisation declared COVID-19 a global pandemic on 11 March 2020 and it was subsequently declared a National disaster in South Africa on 15 March 2020 by President Cyril Ramaphosa after 61 confirmed cases. COVID-19 is an infectious disease caused by a newly discovered coronavirus. The outbreak can be traced back to the city of Wuhan in China and has now infiltrated over 200 countries.

Currently there is no vaccine to cure the virus, however people can take precautionary measures to protect themselves. The rise of infections in South Africa resulted in Government instituting a 21 days lockdown period restricting non-essential movement which was extended by a further 14 days. The objective of the lockdown is to reduce the rapid spread of the virus and to allow Government time to prepare health facilities to save lives.

The lockdown was ensued by the amendment of transport regulations which included suspension of certain services and various restrictions of movements on the roads. This has resulted in notable reductions in traffic volumes. We have also observed a reduction in road crashes and fatalities during the lockdown period.

The 2020 Easter Road Safety Reports paints an interesting picture of the possibility of safer roads in South Africa. We lost a total of 28 lives on our roads during the Easter period with all the provinces recording less than 8 fatalities, meanwhile two provinces recorded no fatalities. Yes, the Easter weekend was during the lockdown period however the 80 % reduction in fatal crashes gives us hope and a glimpse of how safer our roads can be when there is compliance and cooperation.

Year	GA	KZN	WC	EC	FS	MP	NW	LI	NC	RSA
2019	16	37	18	22	4	17	13	32	3	162
2020	3	6	3	5	0	7	3	1	0	28
Change	-13	-31	-15	-17	-4	-10	-10	-31	-3	-134
% Change	-81	-84	-83	-77	-100	-59	-77	-97	-100	-83

*Easter Road Fatalities Stats: Source Road Traffic Information RTMC*

Perhaps it is time to review legislation and regulations post the lockdown, majority of crashes still occur during the night. Isn't it time to limit movements on the roads during the night? This is also time for road users to self-introspect, can't we continue to travel only when it is necessary to do so and limit our movements late at night? Voluntary adherence to road rules should be a norm during and post the lockdown, it can save many lives.

During the lockdown we have also witnessed a surge in the number of people arrested for violating regulations. The effectiveness of law

enforcement during the lockdown is something that should be emulated and it should continue post the lockdown.

Based on the statistics, well over 10 000 lives are lost on our roads annually, this figure can be drastically reduced by simply obeying the rules of the road. Not all is lost, let us emerge out of this crisis stronger and more determined to conquer.

Together we can defeat COVID-19 and together we can also defeat the carnage on our roads.

South African roads are usually a hive of activity during the Easter Weekend but the situation had changed this year with the lockdown in place.

# LOCKDOWN TRAFFIC OPERATIONS

The Transport Minister, Fikile Mbalula together with Advocate Makhosini Msibi, CEO of the Road Traffic Management Corporation (RTMC) led a delegation of officials from the road traffic fraternity including RTMC Board members, as they made stops at various roadblocks and hotspots in Soweto at Freedom Park, Pimville, N1 Grasmere, Vosloorus and Diepsloot townships.

Several motorists were arrested by traffic officers for violating lockdown regulations and driving un-roadworthy vehicles. In one instance a taxi driver with a learner's licence and a disc that had expired in 2018 was arrested on the spot.

Transport Minister Fikile Mbalula expressed concerns at the increasing non-compliance with transport regulations and directions aimed at reinforcing the nationwide lockdown announced by President Cyril Ramaphosa.

According to the Minister, at the start of the second week of the lockdown – the number of cars stopped and checked at roadblocks across the country had dramatically increased.

The number of e-hailing providers that failed to adhere to passenger limits for a vehicle licensed to carry 4 passengers increased from 32 and peaked 509 within two days.

The number of minibus-taxis that failed to adhere to the passenger limit increased from 18 to 509 within two days.

Motorists also attempted to cross provincial boundaries despite a ban on inter-provincial travel.

*“This conduct demonstrated a worrying trend of disobedience of regulations by motorists which is also experienced in the disregard of the rules of the road.”*

“Those who undermine efforts to arrest the spread of this pandemic must face the full might of the law and equally face condemnation by society, as their behavior places the lives of millions at risk,” said the Minister.

# SCREENING AND TESTING

## How do you test a person for COVID-19?

### What is screening?

- Screening of individuals is done by using a series of questions to determine exposure risk and if there are any signs and symptoms.
- Screening may also involve some type of physical examination, such as a temperature check. method used by health workers to detect if you may have COVID-19 or not.
- The health worker will ask you questions and scan your forehead to take your temperature reading.

### What questions will the health worker ask me?

- If you have travelled to a high risk country in the last 14 days
- If you have had contact with anyone with confirmed COVID-19 in the last 14 days
- If you have symptoms such as fever, cough and difficulty in breathing

### What is testing?

Testing of individuals is ordered, if it is determined that:

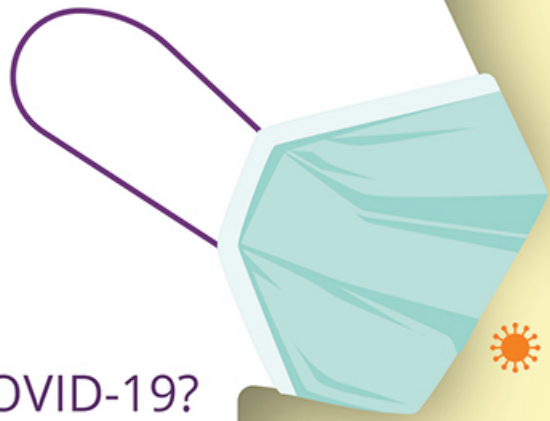
- there is a significant risk from the screening
- there are underlying conditions and/or there are symptoms being presented
- there could also be other factors taken into account if a COVID-19 test is ordered.

### How do you test a person for COVID-19?

- COVID-19 testing can be done at most state public health laboratories.
- Hospitals also have abilities to test for COVID-19 infection.
- Health professionals are working with public health departments and the NICD to determine who should be tested for COVID-19.
- To test someone for COVID-19, a medical professional or health worker swabs inside the patient's nostril and possibly their throat.
- If the patient has a wet cough, a sputum sample (the mixture of saliva and mucus that is coughed up) will also be collected.

### What has the RTMC done to date?

- Developed an online screening questionnaire available on Intranet for employees to determine the virus exposure risk and signs.
- Employees are screened on arrival at the workplace to take their temperature reading on daily basis.



**Road Traffic**  
Management Corporation



A proud initiative of  
The Department of Transport





## Road Traffic Management Corporation

### ROAD TRAFFIC MANAGEMENT CORPORATION

#### Contact details

Tel: 012 999-5200

Fax: 012 991-0371

Email: [Info@rtmc.co.za](mailto:Info@rtmc.co.za)

#### Physical Address

Eco Origin Office Park

Block F, 349 Witch-Hazel Street

Highveld Ext 79, Gauteng

#### Address

Private Bag X147

Pretoria

0001

# Safer Roads

Road Traffic Management Corporation, the lead agency in road safety.



SAVE SOUTH AFRICA

#### EDITOR

Zoleka Mbuli

#### CONTRIBUTORS

Lerato Selepe

Vusi Matshika

Brian Mulaudzi

Tshepo Mabula

Thato Mosena

Obakeng Mphaka

Luthando Ngilana

Hlobisile Ngcongco

Xabiso Dlungwana